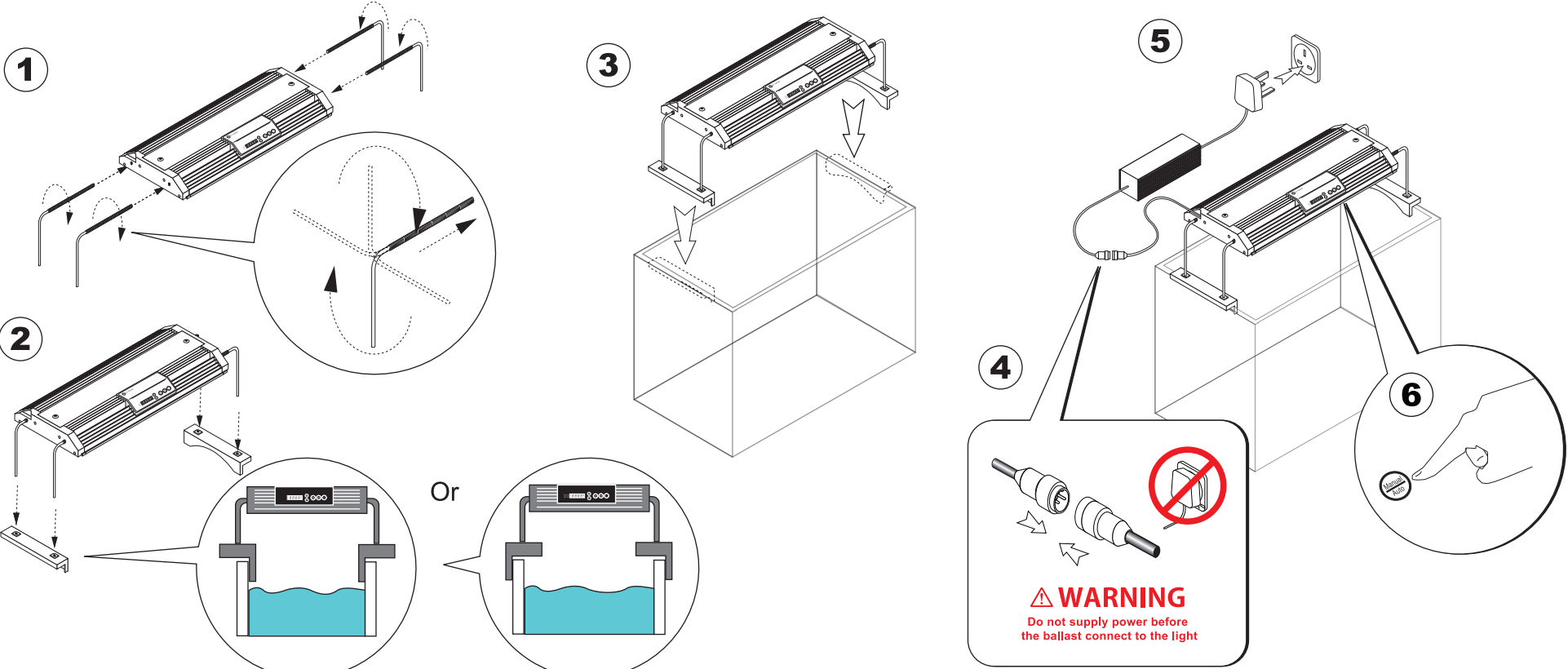
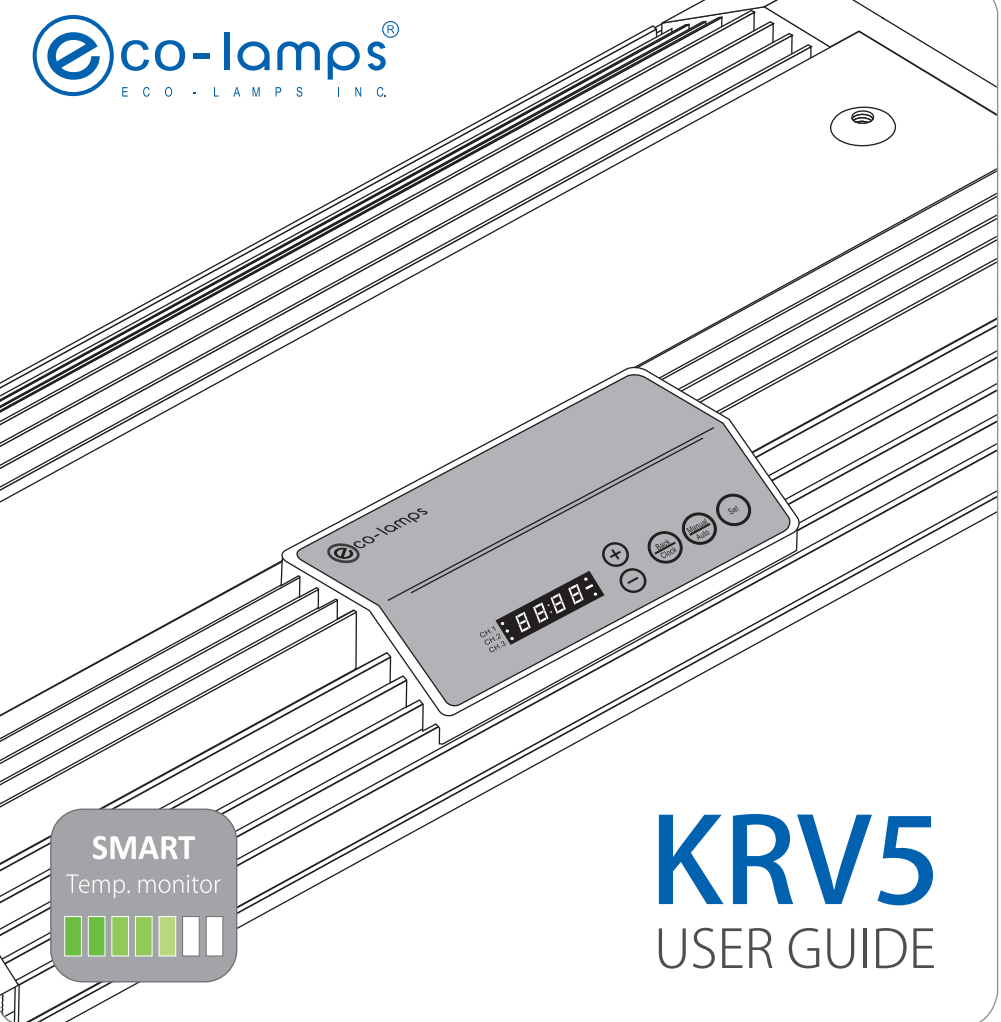
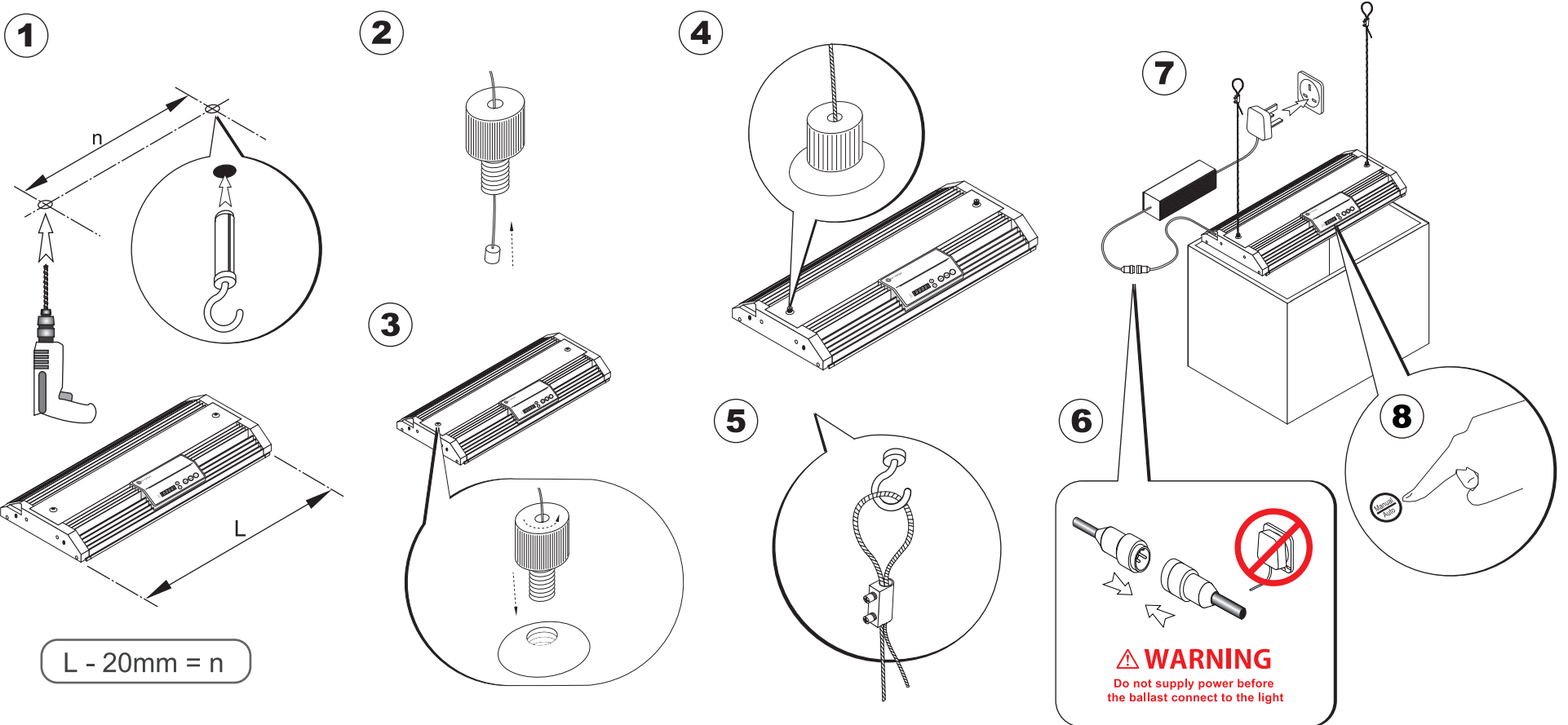


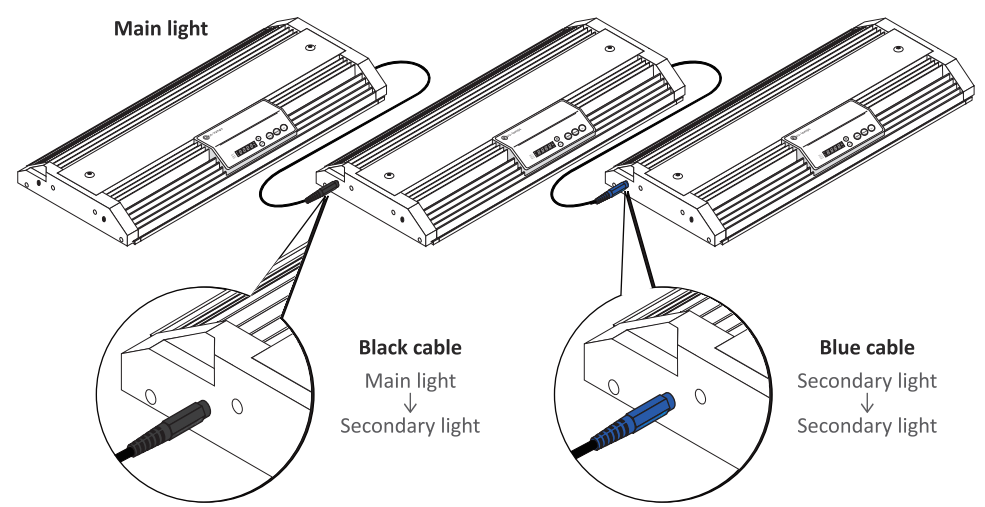
Adjustable width tank mounts



Ceiling mounts



Multiple KR configuration



Choose one of KRV5 as a main controller. Select "HA-0" in the secondary light(s) and it will be controlled by the main light.

WARNING
DO NOT attempt to service the fixture yourself. Doing this may render this warranty void.

KRV5

USER GUIDE

Five functional keys

- + or - Press to scroll through the menus and options
- Back/Clock Use this key to edit time / go back
- Manual/Auto Use this key to change the light between Manual or Auto mode
- Set Use this key to select or enter

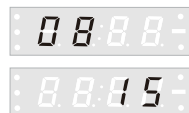
LED display and indications

The LED display hour (H:09) and minute (A:00) alternate in 3s.

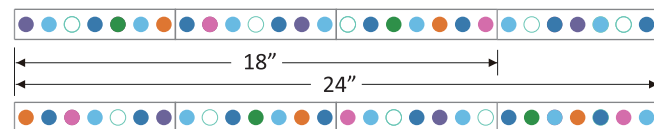


Time setting

- 1) Press "Back/Clock" to set the clock
- 2) Press "+/-" & "Set" to set the hour
- 3) Press "+/-" & "Set" to set the minute



KRV5 LED Specifications



Light Channels

	18"	24"	
CH.1	7 x	9 x	5 x
CH.2	10 x	14 x	5 x
CH.3	10 x	14 x	4 x

● CREE XT-E 8,500K
● CREE XT-E 4,500K
● CREE XP-E 468nm
● BlueViolet 420nm
● UV 400nm
● Cyan 500nm
● CREE XT-E 442nm

*Specifications are subject to change without notice

Manual Mode

Switch to manual mode by pressing the "Manual/Auto" button

Manual mode setting

- 1) Press "+/-" to select a light mode
- 2) Press "Manual/Auto" to enter

Manual mode setting	
HA-0	Off mode : Press "Set" to check the firmware version
HA-1	The intensity setting CH.1, CH.2 and CH.3 are able to programmed from 0-100%. Read Note M-2 for details
HA-2	Lightning mode The fixture will constantly produce lightning
HA-3	Demo mode : Read Note M-3 for details

Note M-1 : How to check the firmware version of the light?

- 1) Switch to Manual mode by pressing "Manual/Auto" button
- 2) Press "+/-" to select light mode "HA-0"
- 3) Press "Set" to check the firmware version (eg. 2.05)

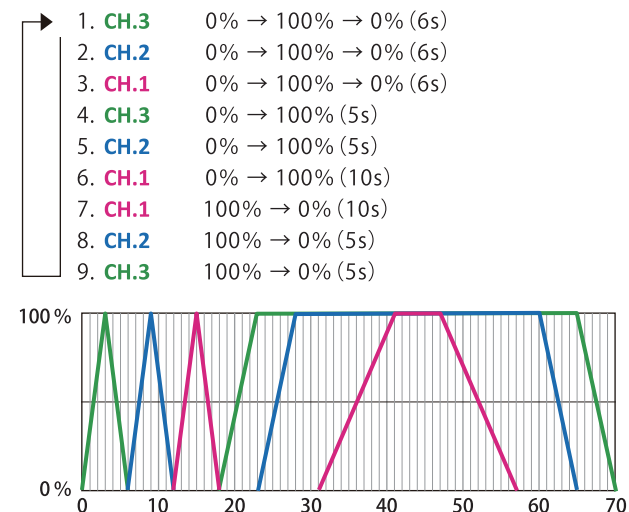
Note M-2 : How to set the intensity level?

- 1) Press "Set" to enter the setting of CH.1
Press "+/-" to set intensity level from 0% - 100%
- 2) Press "Set" to enter the setting of CH.2
Press "+/-" to set intensity level from 0% - 100%
- 3) Press "Set" to enter the setting of CH.3
Press "+/-" to set intensity level from 0% - 100%
- 4) Press "Set" to save and complete the setting



Note M-3 : Demo mode

"HA-d" is Demo mode, cycle will keep repeating as follows.



Auto Mode

Switch to auto mode by pressing the "Manual/Auto" button

Auto mode setting

- 1) Press "Set", LED display time stage "St07" (Factory default)
Press "Set" & "+/-" to set from "St02" to "St07"
- 2) Press "+/-" to scroll up and down between the following time stages
"St07", "t1-t7", "Endt", "LU" and "Lt"

Time stage "t1"- "t7"

Press "Set" to set the selected time stage "t1"- "t7"

- 1) Press "Set" & "+/-" to set begin time in hour/minute
- 2) Press "Set" to the intensity setting

End time "Endt"

Press "Set" & "+/-" to set the end time of the light

Lunar cycle function "LU"

Press "Set" & "+/-" to set the lunar cycle function

"LU-n" - Lunar cycle function OFF

"LU-y" - Lunar cycle function ON

(Read **Note A-2** for details of Lunar cycle function)

Lightning mode "Lt"

Press "Set" & "+/-" to set the lightning mode "Lt"

1) "Lt-n" - Lightning mode OFF

2) "Lt-y" - Lightning mode ON

Press "Set" & "+/-" to set the begin time of lightning mode

Press "Set" & "+/-" to set the lasting time from "00-59"

Reset to the default setting

- 1) Press both "Back/Clock" & "Set", LED display "St07"
Press "Set" to confirm (Read **Note A-1** for details)

Note A-1 : Factory default setting

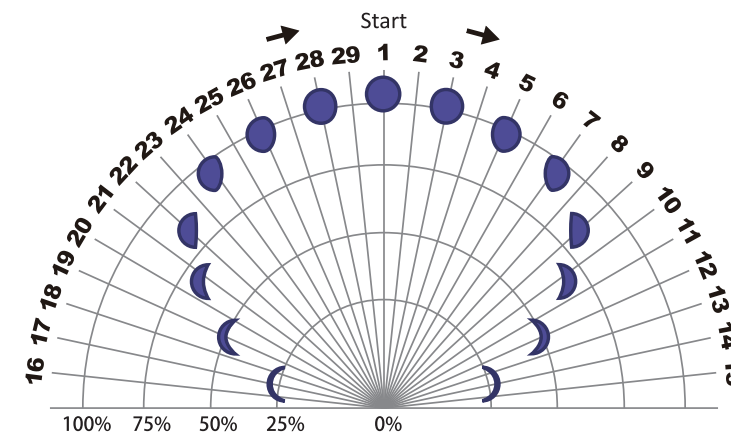
Factory default setting				
Stage (St)	Time	CH.1	CH.2	CH.3
1	07:00	0	0	30
2	08:00	0	10	30
3	09:00	50	50	10
4	11:00	100	100	10
5	17:00	50	80	10
6	18:00	10	80	10
7	21:00	0	0	100
End	00:00	-	-	-

The setting of the time stages should be "t1 < t2 < t3 < t4 < t5 < t6 < t7 < Endt"

For example: "t1" begin at 09:00, "t2" begin at 11:00, "t3" begin at 10:00.

In this case, "t2" is overwritten by "t3"

Note A-2 : Lunar cycle function



ACCESSORIES

